

6th Grade to 7th Grade

Moving on up!



Counseling Staff

Counselors

Ms. Amico - 6th grade

Mr. McMillan - 7th grade

Mrs. Echols- 8th grade

Attendance/Counseling Secretary

Mrs. Leticia

Your Schedule



1. Social Studies 7
 2. Science 7
 3. English 7
 4. Math
- Core Classes
- Diagram description: Four arrows point from the text 'Core Classes' to the right of items 1, 2, 3, and 4.

5. **Exploratory Hour** – Semester Classes - 20 weeks (1/2 year) each:

- Health (all 7th grade students take once)
- Physical Education (all 7th grade students take once)
- STEM class (Choose ONE - Flight & Space or App. & Animation)
- Semester Long Exploratory Course

6. **Exploratory Hour -**

- **Music Option**- Choir or Band = **Full year**
-OR-
- Semester Exploratory Courses: 20 weeks of remaining offerings

Exploratory Menu:

Art 7, Careers 7, French 7, Spanish 7

Advanced English 7

Placement criteria- All eligible students will receive an invitation for placement testing in April.

- A cut score of 70th Percentile or higher on the 2023 Winter NWEA ELA Test.
- A score of 221 or higher on the NWEA ELA Test.
- **Advanced English Placement Information:**
 - * Students interested in pursuing Advanced English must sign and return the invitation form
 - * Students must take the Advanced English Placement test to be considered for this class.
- **The Advanced English Placement Test for 7th grade is being offered in the Spring.** Only students who receive and return the signed invitation will take the placement test. **Placements will not be determined prior to students completing their 7th grade course selection process.**
- **Students will be notified by mail in regards to their placement(s) prior to May 23rd. Students must accept their placement in the class prior to May 31st, and those decisions are final.**

Advanced Math 7

Placement criteria

- Choose this if you are in Advanced Math 6 this year with a B or better grade.

OR

- A cut score of 70th Percentile or higher on the 2023 Winter NWEA MATH Test.
- A score of 227 or higher on the NWEA MATH Test.

STEM Options - Pick ONE

STEM 7 - App and Animation Creators

Students explore computer programming, app development, using Code.org ,and MIT App Inventor, and other online development tools. They learn graphic design, event-driven programming, debugging, and algorithm creation using variables and conditional logic. They create apps and fun interactive games that apply these concepts and use basic user interface features, media, and animation.

STEM 7 - Flight and Space

The exciting world of aerospace comes alive through Flight and Space. Students explore the science behind aeronautics and use their knowledge to design, prototype, and test model rocket fuel and a glider. Students will also get to experience virtual space travel simulations and projects.

Sample Schedules

Your schedule next year might look like one of the following...



Vocal Music Student

1st hour - Social Studies

2nd hour - Science

3rd hour - **Health** (One Semester) & **PE** (One Semester)

4th hour - English

5th hour - **Choir**

6th hour - Math



Band Student

1st hour - Social Studies

2nd hour - English

3rd hour – **Band**

4th hour - Science

5th hour – **Health & PE**

6th hour - Math



Exploratory Student

(non-music/choir student)

1st hour - Science

2nd hour – Social Studies

3rd hour - **Health (One Semester) & PE (One Semester)**

4th hour - English

5th hour – 2 more Semester exploratory courses

{ Stem - Flight & Space or App & Animation }

And one of the following

{ Art, Careers 7, Spanish 7, French 7 }**

**Exploratory classes will run based on student requests and may change.

6th hour - Math

Academic Support

1st hour - Math

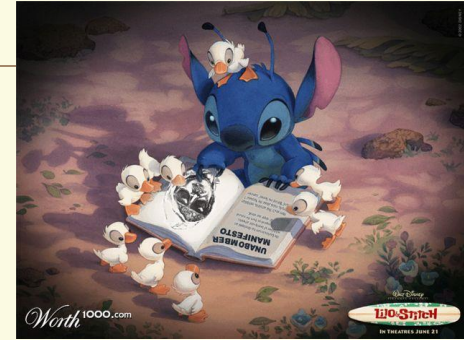
2nd hour - English

3rd hour – **Academic Support Class**

4th hour - Science

5th hour – **Health & PE**

6th hour – Social Studies



**Hola
Amigo!**



Español para hispanohablantes (Spanish for Spanish-speakers)



Do you already speak Spanish at home?

Do you want to improve your Spanish reading and writing skills?

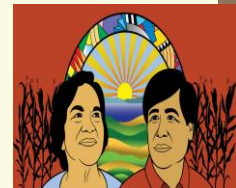
Do you want to be in class with other students who also speak Spanish?

Then Español para hispanohablantes is the class for you!



In class, we will...

- *Study history, current events, & the geography of the Spanish-speaking world*
- *Learn about myths/legends/folktales, art, music, food, sports, & travel*
- *Share about & explore holidays and traditions*
- *Learn about the lives & contributions of important Hispanic people*
- *Read a variety of Spanish language texts together, including picture books, stories, poems, short novels, and informational texts*
- *Produce our own writing in Spanish*



****If you already speak Spanish & want to continue with Spanish, THIS is the class you should take. The other Spanish classes offered at AMS are meant for beginners and will not meet your needs.*

Bridge Buddies LINKS elective

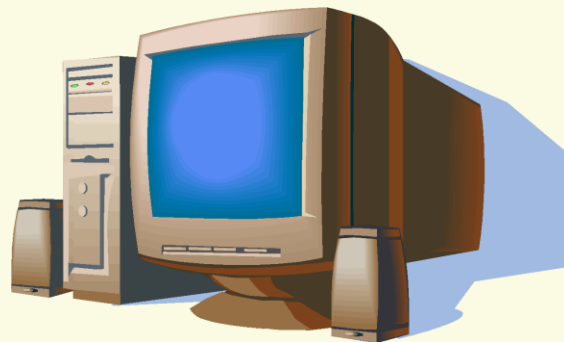
What does it mean to be a LINK?

- Willing and wanting to become a better friend towards everyone.
- Attend assigned classes with your friend everyday.
- Play the role of a typical student in the class (example: class is taking notes, so are you & your link)!
- Model appropriate behavior all throughout the day from the bus to classes and lunch.
- If you as a LINK notice a buddy struggling in the classroom, remind the student to stay on task and clarify assignment if needed.
- You are going to working on modeling conversation skills
i.e encouraging students to talk more and initiating conversation & how to keep it going.
Verbalize assignment clarity

This is an option for current LINK students and those interested in the LINKS program

COMPLETING THE PROCESS

- You will fill out your yellow scheduling card right now!
- Take it home and review with your parents.
- Both you and your parent need to sign and return to the Attendance Office by: **March 5, 2024!**



When is your yellow form due?

**Wednesday,
March 5, 2024**

ONLINE RESOURCES



Schools Calendars A

Information & Resources

Curriculum & Scheduling

tics

os & Groups

Counseling Resources

Honor Roll

IMPORTANT LINKS ON THE
AMS WEBSITE

Don't forget to turn in
your yellow sheet by
March 5, 2024

Get Involved!

After School Clubs
After School Sports
NJHS
Student Council
Club Route 56
Drama Club/Plays



Try something new next year....

Any Questions?



Feel free to ask your counselor
for assistance.

You can also call us at AMS.

We are happy to help!

